



Summit County Public Art
Attn: Jocelyn Scudder
Summit County Public Art Advisory Board Administrator
PO Box 4455
Park City, UT 84060
jscudder@summitcounty.org
<http://summitcounty.org/249/Public-Art>

June 5, 2018

Call to Artists: Artwork for South Summit Services Building

South Summit Services Building Interior Artwork Project

Celebrating multicultural heritage and the stunning natural environment in Summit County. The Summit County Public Art Advisory Board ("SCPAAB") is seeking artists to propose a concept for highly creative three-dimensional artwork to be placed on the interior of the South Summit Services Building.



KAMAS SERVICE CENTER | SUMMIT COUNTY | METHODSTUDIO^{INC.}

PROJECT BUDGET: Up to \$60,000

Budget is inclusive of artists' fees, usage fees, insurance, labor and equipment to design and produce artwork, and travel costs including airfare, hotel, and ground transportation.

PROJECT TIMELINE:

Summit County completed construction of the South Summit Services Building in April 2018. The projected artwork install period will take place in winter of 2018, exact date to be



determined. These dates are subject to change and artists are expected to remain as flexible as possible in this regard.

ELIGIBILITY:

Any artist or team of artists interested in creating a three dimensional art installation driven by the project goals, to be completed in winter 2018, may complete a proposal in accordance with the guidelines provide below. Additional consideration may be given to submissions with stated relevance and ties to Summit County, UT. SCPAAB Members, employees of Summit County, selection panel members, project personnel, and immediate family members of all of the above are not eligible to apply.

APPLICATION:

Artists and/or artist teams may submit concepts for the South Summit Services Building artwork. Submission of digital materials is required. Please review all guidelines in this Call to Artists and resources provided before starting an application. Incomplete responses will not be considered.

DEADLINE:

5 PM Mountain Time on **August 3, 2018**. Digital format responses will be accepted via email Attn: Jocelyn Scudder, Summit County Public Art Advisory Board Administrator at jscudder@summitcounty.org or via U.S. postal service (flash drives). Responses must be received, not postmarked, by the deadline date. Required application materials can be found below in the 'Application Materials' section of this RFP, which is located at <http://summitcounty.org/249/Public-Art>

Project Background

The South Summit Services Building is an important community gathering space located on Kamas's Main Street. The space is surrounded by local restaurants, shops, and businesses as well as neighborhoods that are within walking distance. The facility provides community services including: Senior Citizen Services, Library, Motor Vehicle, and Health Department. The building will be used by Kamas Valley residents, and will see annual visitors as they enter the 'Gateway to the Uintas'.

The building's Interior hallway serves as the primary connection to the many services in the facility. The SCPAAB seeks artwork for the interior hallway that reflects the stunning natural and agricultural environment that surrounds Kamas Valley. Artwork submissions should engage the viewer well beyond the project's installation. Project proposals may include any



form of two or three dimensional artwork. Preference may be given to artist who use sustainable practices in their work.

There are six anchor points provided in the ceiling for the artwork to be suspended from. The maximum load per anchor is 800 pounds. Not all anchor points are required to be used. Artists shall provide information in their proposal for how they anticipate connecting their installations to the anchor points in the ceiling. See included drawings for locations of anchors in the ceiling, and for a typical enlarged anchor detail.

Once an artist or artist team is selected, they shall provide details and engineering calculations demonstrating the total load of the installation, how it is distributed into each anchor being used, and how they propose to connect to each anchor point. Artists are also encouraged to consider how the installation will react during a seismic event, and to propose a method to sufficiently brace the installation to keep it from swinging. By request, the project architect and/or engineer can provide feedback to the selected artist candidate for how to brace their proposed installation. Once the details and engineering is reviewed by the project engineer and/or architect, the artist may be responsible to provide additional information, clarification of their proposed approach, or revised details to demonstrate compliance. Once the engineering and details are approved by the project architect and/or engineer, fabrication and installation can proceed.

Artwork Opportunity

Goals of the South Summit Services Building Interior Artwork:

SCPAAB is seeking artwork for the interior of the South Summit Services Building that will:

- Reflect the natural and agricultural environment that surrounds Kamas Valley.
- Connect people to our community celebrating the multicultural heritage of Kamas Valley.
- Create and celebrate a strong sense of place, recognizing that the location of the building is seated at the 'Gateway to the Uintas'.
- Engage the viewer beyond the project's installation.
- Utilize sustainable practices.

Timeline

Artist Selection Schedule Concepts Due	Friday, August 3, 2018
Semi-Finalists Selected By	Friday, August 17, 2018
Semi-Finalist Materials Due	Friday, August 31, 2018
Semi-Finalist Application Review Begins	Friday, September 7, 2018



Finalist(s) Selected By
Project Completion

Friday, September 14, 2018
Monday, December 31, 2018

Artist Selection Criteria

Panelists will use the following criteria to rank submissions. Please note that late or incomplete applications will not be accepted.

1. Compliance with stated project creative goals and objectives.
2. A demonstrated applicant ability to create artworks appropriate in concept for this project.
3. A demonstrated applicant ability to meet and conform to the demands of project schedule including but not limited to design review and artwork installation.
4. A proposed concept that helps achieve the stated goals of the South Summit Services Building Interior Artwork.
5. Adherence to the maximum budget of Sixty Thousand Dollars (\$60,000.00).
6. Functionality and durability of the proposed services. The art is intended for permanent display.
7. Professional References - Applicants should list and provide contact information for at least three (3) references to contact for similar work performed.
8. Additional sustainable or "green" practices and qualities of your business or product.

Artist Selection Process

CONCEPT SELECTION PANEL

The SCPAAB shall serve as the bid selection committee to evaluate proposals for Public Artwork. The County Staff Liaison and the Board Administrator shall coordinate and facilitate the SCPAAB's actions. The SCPAAB shall make its recommendation to the County Manager. The County Manager shall make the award for Public Artwork. The County Manager may seek input from the County Council. Selection of Public Artwork shall be based upon adherence to the goals associated with the Qualifying Capital Improvement Project and the Summit County Public Art Program.

SEMI-FINALIST APPLICATION REVIEW

The artists whose concepts are selected by SCPAAB and the County Manager for additional study will become semi-finalists and be asked to submit additional project details including final budget, drawings, models if needed, and other supporting documentation. Each semi-finalist will be paid an honorarium of \$250 to develop complete proposals.

Participation in an initial orientation and question/answer session (via Phone or Skype) will be required. Preliminary contract specifications will be included as part of the project review phase. Artists will present their proposals to the finalist selection panel via Skype or



in-person interview. Finalists' submissions will be reviewed by SCPAAB and County departments for feedback on relevant environmental, legal, and/or financial issues related to the designs. SCPAAB reserves the right to not undergo a semi-finalist application review if they deem it unnecessary.

FINALIST SELECTION PANEL

The selection panel will reconvene to consider finalists' proposals and the information obtained during the Skype/in-person interviews and will select the proposals for final approval by the County Manager. After approval, final contracting will begin. All SCPAAB meetings and Public Art Selection Panel meetings are open to the public and are posted on the Summit County website at least 72 hours in advance of the meeting. To check the meeting schedule for public art projects, please go to summitcounty.org. Summit County reserves the right to make final selections without conducting an interview. Summit County also reserves the right to cancel this project and/or choose not to select from the submissions received through this Call to Artists or to select portions of each submission, as negotiated with the artist or artist team.

Application Materials

By the submission deadline, artists applying for this project must submit the following materials via email to Jocelyn Scudder, Summit County Public Art Advisory Board Administrator at jscudder@summitcounty.org. Required application materials can be found online at <http://summitcounty.org/249/Public-Art>.

Profile – Applicant contact information: Name, Organizational Affiliation, Address, Website, Social Media Sites, Phone/Email.

Resume – Two-page maximum current professional resume. Artist teams should submit one document that incorporates two-page resumes for each team member. Only .doc and .pdf documents will be accepted.

Statement of Interest – 700 words or less. Explain why the artist or artist team is interested in the project; how the artist or artist team's work is appropriate for this project; how the artist or artist team's work will reach the stated goals of the project. If submitting as a team, the statement should include a description of any past collaborative work experience and how the team anticipates working together on this type of project.

Initial Concept – 1500 words or less. Explain the artist's or artist team's initial concept for



artwork at the sites included in this Call to Artists. This should include design concept and goals; design sketches representing proposed projects; how the design meets the project goals; art medium(s) to be used; materials; and approximate installation time frame.

Budget – The proposal must include a preliminary budget, outlining project costs including materials, labor, insurance and direct costs. A more detailed budget will be requested from Semi-finalists.

Work Samples – Applicants may submit up to three video files, if relevant to their proposed concept(s). Applicants are encouraged to submit samples of past work that best illustrate their qualifications for this project. Up to ten digital images (no composites) as visual reflections of the artwork application, with an Annotated Work Sample Description including a brief description of the artwork, the title of the artwork, completion date, medium, and dimensions. Upload JPG files only; 1920 pixels on the longest side and at least 72 dpi.

Contract – The individual(s) selected shall be required to enter into a professional services contract with the County on a form to be drafted and approved by the Summit County Attorney's Office. Applicants must read the County's standard professional services agreement posted at <http://summitcounty.org/249/Public-Art> and insurance requirement included as part of this Call. Contracted Artist(s) may be subject to additional requirements in the contract related specifically to the project.

References – Applicants must provide three (3) professional and/or client references with their applications.

Deadline

Required materials must be received no later than 5 PM Mountain Time on **Friday, August 3, 2018**. Online submissions and mailed application materials must be received by the deadline. Late and/or incomplete proposals will not be accepted.

Questions

Summit County Public Art
Attn: Jocelyn Scudder
Summit County Public Art Advisory Board Administrator
PO Box 4455
Park City, UT 84060
jscudder@summitcounty.org
<http://summitcounty.org/249/Public-Art>



Relevant Websites

Summit County: www.summitcounty.org

Summit County Public Art: <http://summitcounty.org/249/Public-Art>

Summit County History: www.summitcounty.org/130/Historical-Society

Kamas Valley Business Association: <http://www.kamasvalleybusiness.com/>

Summit County Library: <http://www.youseemore.com/SummitCounty/about.asp>

Kamas City: <http://www.youseemore.com/SummitCounty/about.asp>

Site Plans



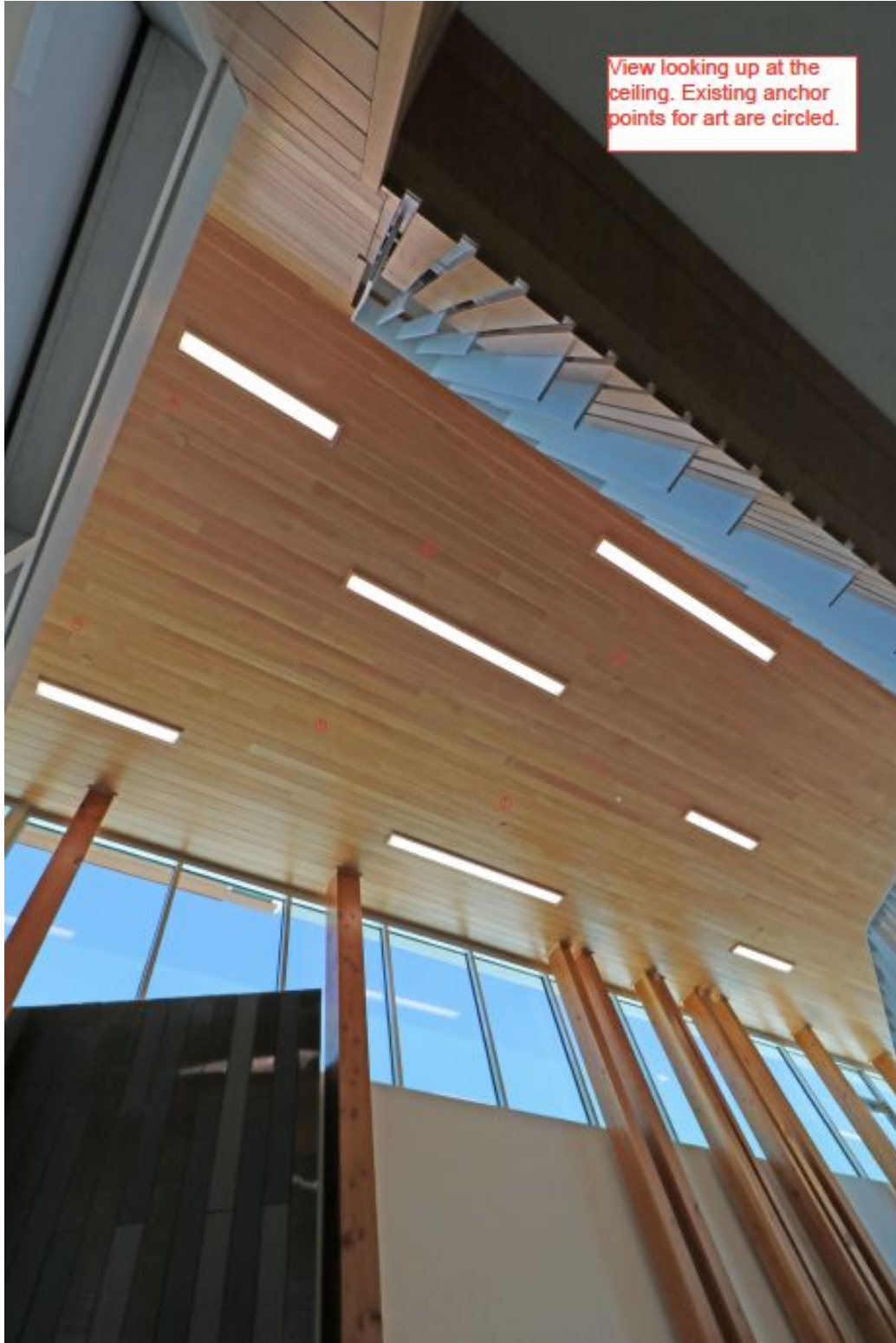


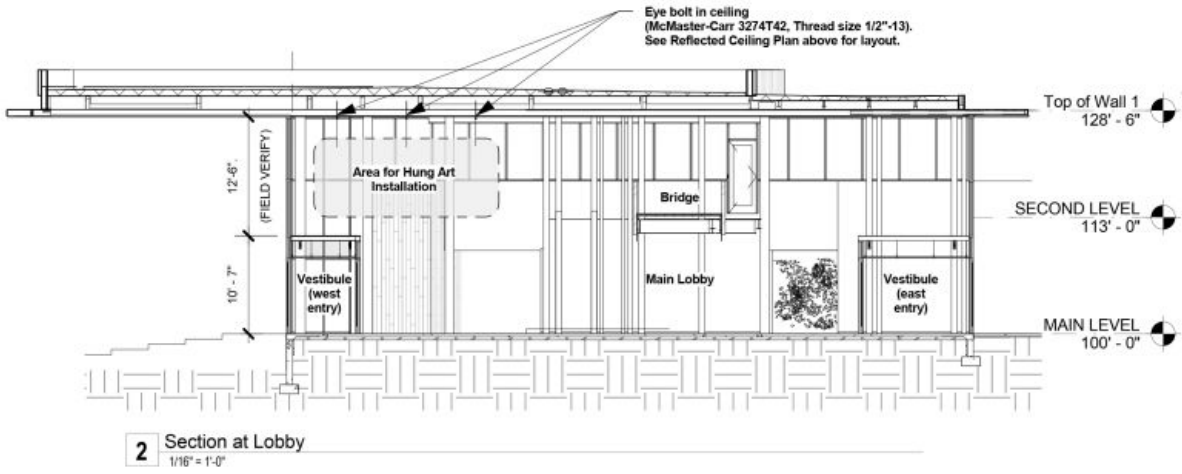
KAMAS SERVICE CENTER | SUMMIT COUNTY | METHODSTUDIO^{INC.}



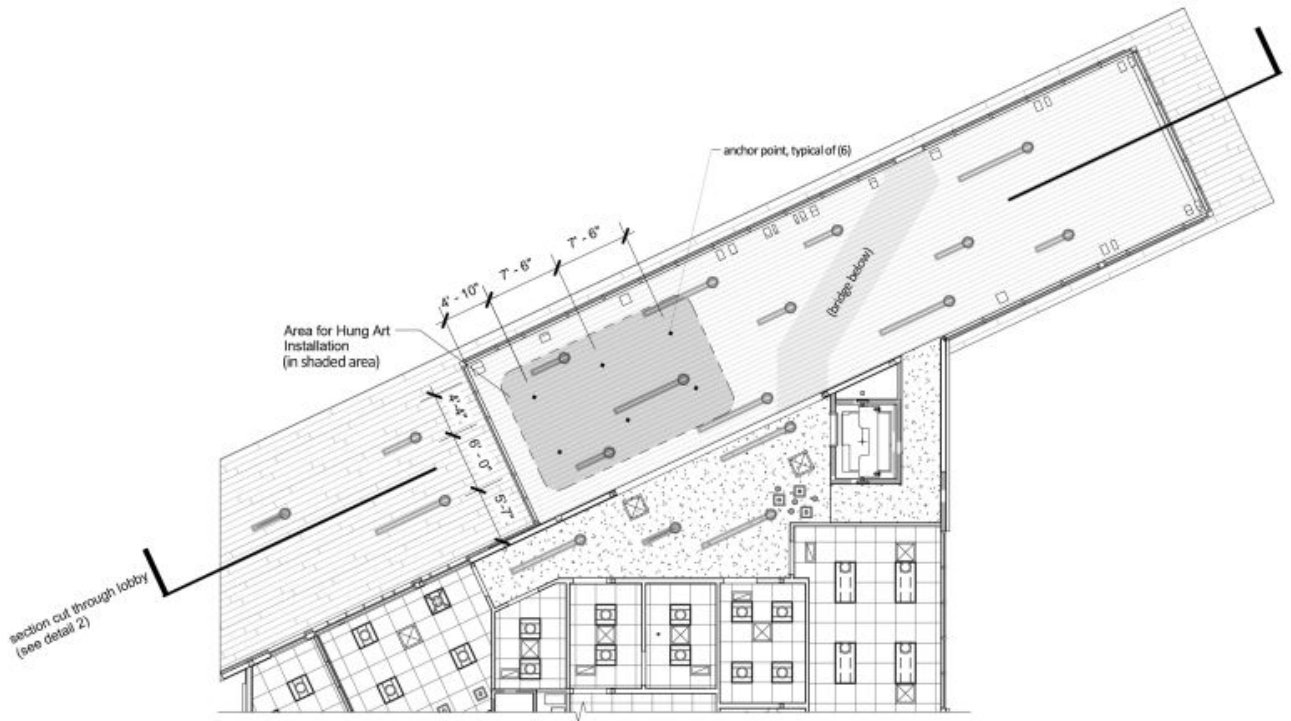
View from second level bridge looking west.
Existing anchor points for art are circled







KAMAS SERVICE CENTER | SUMMIT COUNTY | METHOD STUDIO^{INC.}



1 Reflected Ceiling Plan at Lobby
 1/16" = 1'-0"