

# Materials Placed in Dumpsters: Title 4, Ch. 2

*Proposed modifications to clarify and provide for an  
enforcement mechanism*



# Regulate Dumpster Use

- Household Garbage Only – defined in Ordinance
- Restrictions on Volume
- Requirement to Utilize Recycle Containers for Cardboard when available
- Require all waste be placed in Dumpsters
- Penalty for placement of waste outside of Dumpsters

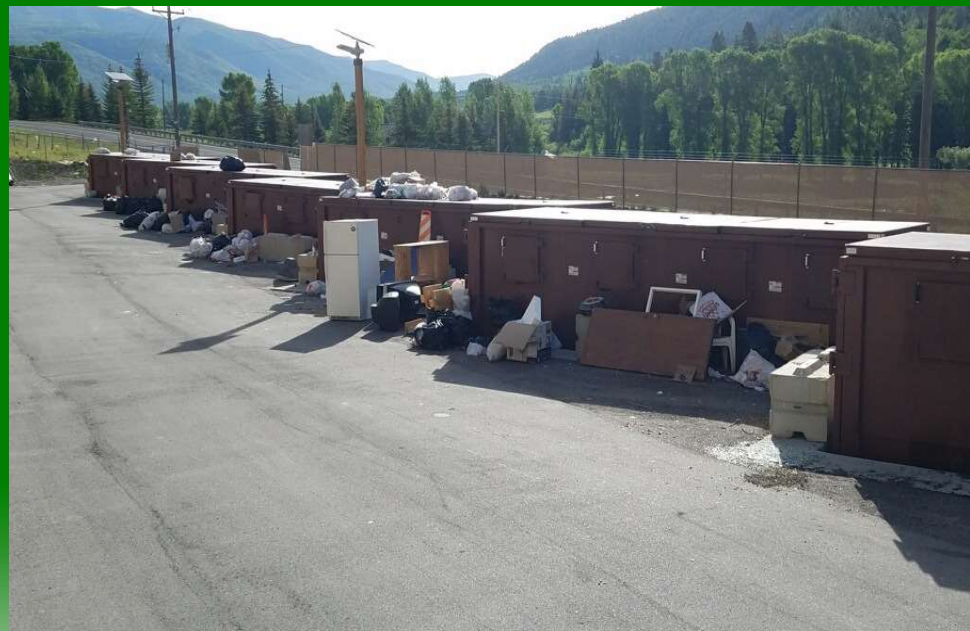


# Regulate Recycle Dumpster Use

- No recyclables left outside of Recycle Dumpster
- No placement of non-recyclables in Recycle Dumpster
- Break down/flattening of boxes and large containers



# Weber Canyon Transfer Site



Questions/Comments?



# Mattress Recycling Program

Proposed Fee Increase



# Spring Back Recycling

- Fees Increased effective August 1, 2020
- Significantly increased our fee deficit
- Current fee: \$12 per unit
- Currently Recycle 1000-1200 mattresses per year
- Proposed fee: \$18 per unit
  - This is essentially a “break-even” fee
  - Covers transport, disposal, rental, and labor



Questions or Comments?

