



BASIN
RECREATION



A Resilience Fund for Summit County

Presentation to Summit County Council

April 28, 2021

Project Team: Scott Morrison, Jessica Kirby, Janna Young, Dano Jauregui, and Lizzie Marsters

AGENDA

- 1) Update on Weber River Watershed Discussions**
- 2) Overview of the Resilience Fund for Summit County**
- 3) Next Steps**

WEBER RIVER WATERSHED PROJECT UPDATE

Since the October 2020 Council presentation, the project team has:

- Defined the project objectives and the roles of the project partners
- Decided on an approach/strategy to funding the project
- Agreed on the need for a Project Manager and drafted a position description
- Identified grant funding opportunities
- Created maps

Unless we act, today's California wildfires are tomorrow's Utah disaster

What are we and our elected representatives doing to prevent or mitigate catastrophic wildfires? Not much.

By Dea Theodore, Contributor | Sep 19, 2020, 11:54am MDT



Photo: KUTV Summit County brush fire

Utah's Wildfire Costs Soar with Human-Caused Blazes

September 21, 2020



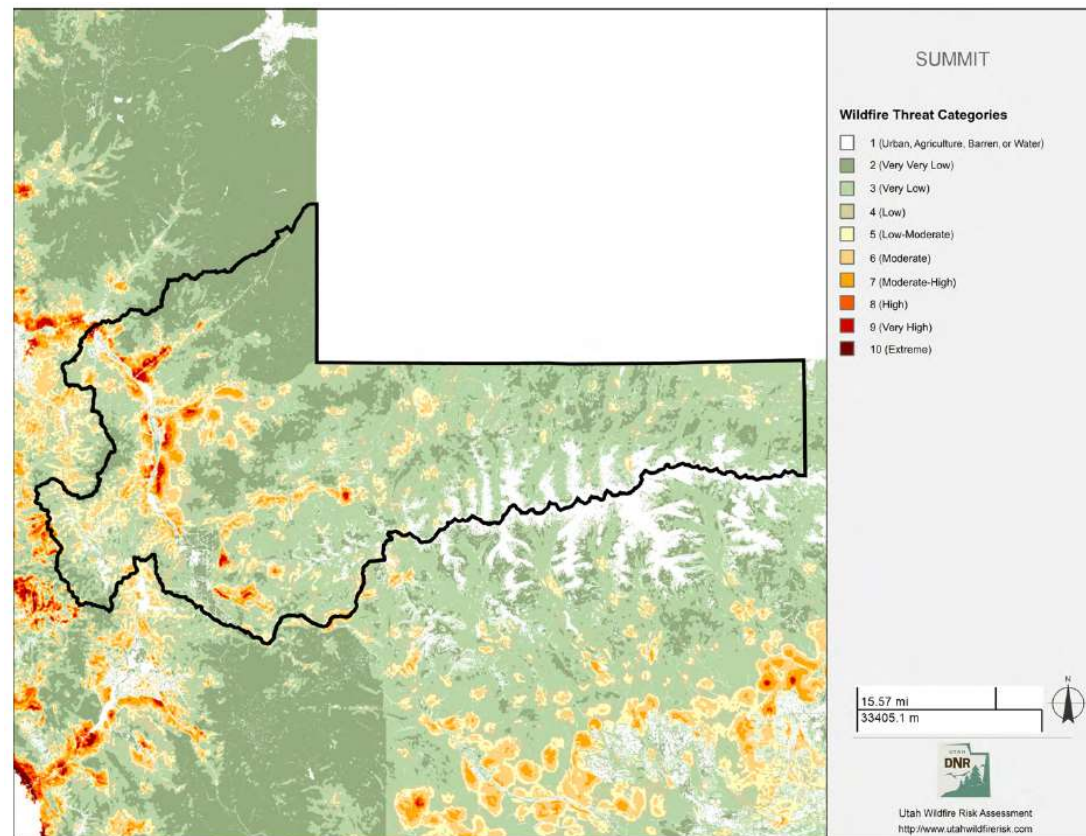
At \$110 million, 2018 is Utah's most expensive wildfire season

BY EMERSON OLIGSCHLAEGER
OCTOBER 19, 2019 AT 9:38 AM

Share ↗

WILDFIRE THREAT SUMMIT COUNTY

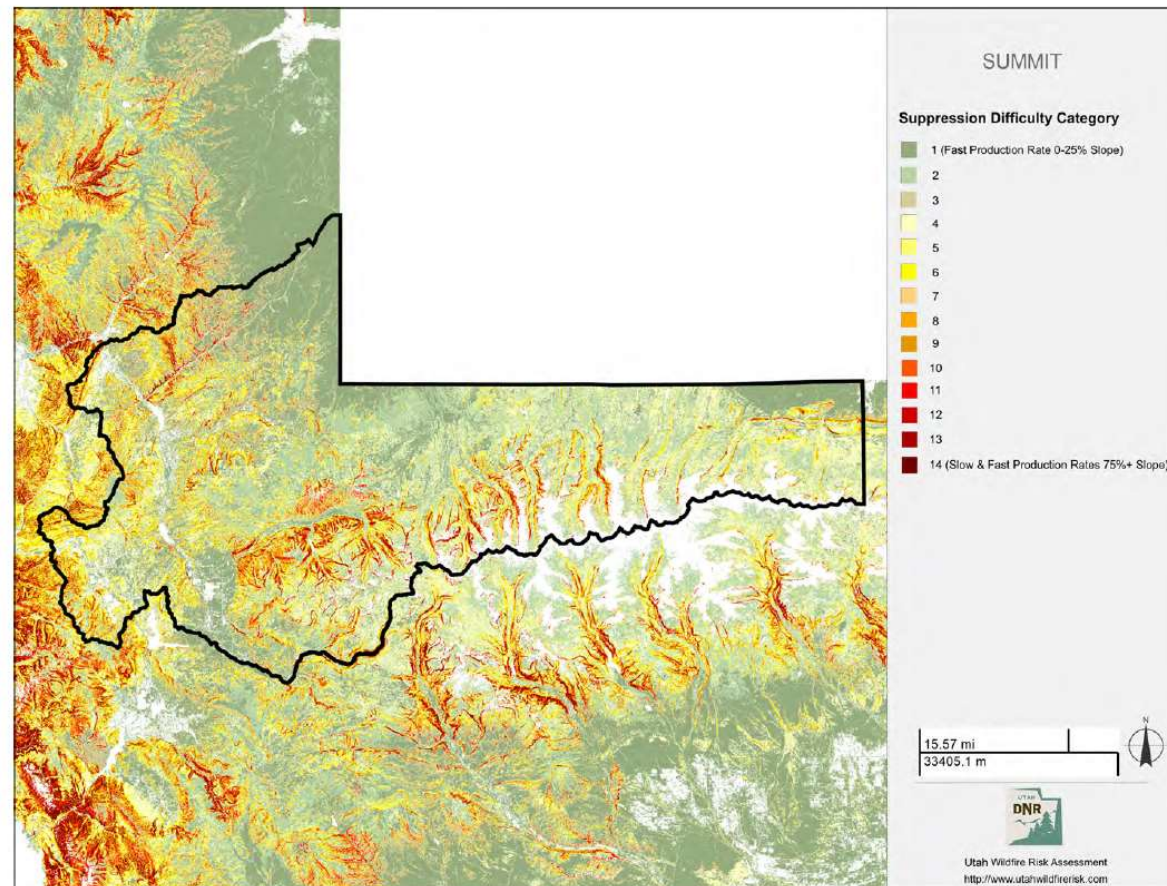
	Wildfire Threat Category	Acres	Percent
	1 (Urban, Agriculture, Barren, or Water)	108,660	9.0 %
	2 (Very Very Low)	273,387	22.7 %
	3 (Very Low)	540,204	44.9 %
	4 (Low)	101,622	8.4 %
	5 (Low-Moderate)	89,727	7.5 %
	6 (Moderate)	55,914	4.6 %
	7 (Moderate-High)	22,920	1.9 %
	8 (High)	6,641	0.6 %
	9 (Very High)	4,207	0.3 %
	10 (Extreme)	342	0.0 %
	Total	1,203,624	100.0 %



Source: Utah WRAP

WILDFIRE SUPPRESSION SUMMIT COUNTY

	Suppression Difficulty Category	Acres	Percent
	1 (Fast Production Rate 0-25% Slope)	272,522	24.9 %
	2	214,755	19.6 %
	3	67,107	6.1 %
	4	235,981	21.6 %
	5	70,709	6.5 %
	6	89,350	8.2 %
	7	26,067	2.4 %
	8	31,035	2.8 %
	9	42,830	3.9 %
	10	12,684	1.2 %
	11	10,117	0.9 %
	12	2,998	0.3 %
	13	14,457	1.3 %
	14 (Slow & Fast Production Rates 75%+ Slope)	4,352	0.4 %
	Total	1,094,964	100.0 %



Source: Utah WRAP

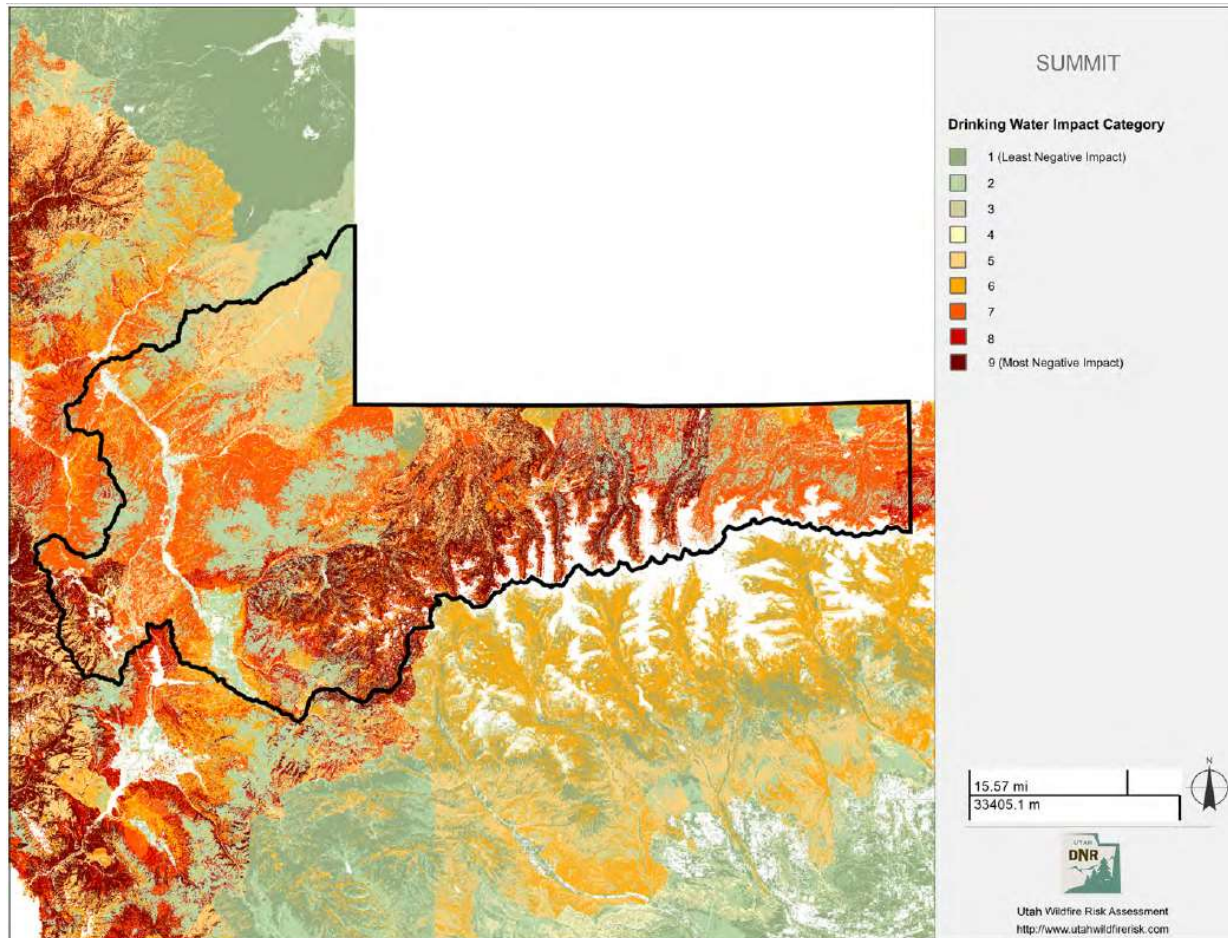
DRINKING WATER IMPACTS

	Drinking Water Category	Acres	Percent
	1 - Lowest	5,286	0.4 %
	2	6,440	0.5 %
	3	35,102	2.9 %
	4	248,748	20.7 %
	5	321,322	26.7 %
	6	124,510	10.3 %
	7	244,252	20.3 %
	8	192,646	16.0 %
	9	24,720	2.1 %
	10 - Highest	71	0.0 %
	Total	1,203,097	100.0 %

	Drinking Water Impacts Category	Acres	Percent
	1 (Least Negative Impact)	12,550	1.1 %
	2	255,052	23.3 %
	3	11,419	1.0 %
	4	2,781	0.3 %
	5	180,143	16.5 %
	6	98,623	9.0 %
	7	340,277	31.1 %
	8	47,940	4.4 %
	9 (Most Negative Impact)	146,177	13.3 %
	Total	1,094,962	100.0 %

Source: Utah WRAP

DRINKING WATER IMPACTS



Infrastructure Asset Impacts Category	Acres	Percent
1 (Least Negative Impact)	16,898	42.4 %
2	9,540	23.9 %
3	747	1.9 %
4	1,960	4.9 %
5	3,049	7.6 %
6	5,531	13.9 %
7	1,647	4.1 %
8	151	0.4 %
9 (Most Negative Impact)	340	0.9 %
Total	39,863	100.0 %

Source: Utah WRAP

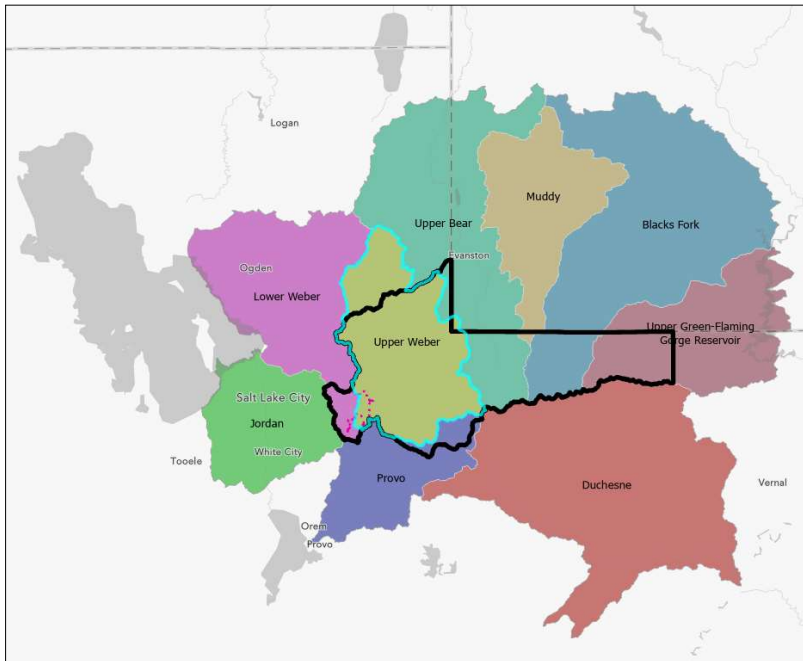
NEED CROSS-JURISDICTIONAL SOLUTION

Owner	Acres
Bureau of Land Management	744
Bureau of Reclamation	1,895
Military Reservations and Corps of Engineers	24
National Forest	366,799
National Wilderness Area	161,864
Private*	643,965
State Parks and Recreation	1,860
State Trust Lands	8,608
State Wildlife Reserve/Management Area	17,633

Private*	Acres
Park City Municipal	5,321
Snyderville Basin Special Recreation District	2,134
Snyderville Basin SRD 63% /Summit County 37%	328
Summit County	272
Summit County SD #3	373
Utah State University	1,100
Private	623,760
Private Protected Lands	10,678

CURRENT ACTION

- The U.S. Forest Service's Heber-Kamas District has already identified **213,000 acres** for priority treatment areas in the Upper Provo, Weber, Bear, and Duchesne
 - Cost could amount to **\$319 to \$383 million** in total treatment costs over the course of **20 years** (cost equivalent of three fire suppression budgets at 2018 levels)



- Snyderville Basin Special Recreation District has identified 900 acres and is treating **400 acres for \$450,000** in the next two years. To address the fire risk on 4,500 acres of neighboring private lands, cost estimates could be as high as **\$7.2 million**
- Mountain Regional Water Special Service District is analyzing **600,000 acres** of the Upper Weber River Watershed within Summit County to determine priority treatment areas. Costs range from **\$321 million to \$457 million**

OVERVIEW RESILIENCE FUND

GOAL: Accelerate the *pace* and *scale* of restoration treatments on public and private lands.

The Partnership aims to:

Objective 1: To **identify, design, and finance projects** that contribute to landscape-scale, ecological resilience with an initial focus in the Weber River watershed

Objective 2: Explore the creation of a **Resilience Fund** to support long-term forest restoration and fire mitigation activities in Summit County

Objective 3: Accelerate **acceptance of forest restoration and fire mitigation activities through community engagement**

OBJECTIVE 1: OPTIMIZING ACTION FOR FUEL REDUCTION

Activities:

- **Define project scope:**

- (1) Identify short- and long-term project needs in the Weber River watershed based on Utah State University (USU) research and US Forest Service land management objectives
- (2) Outreach to local industry and contractors to establish baseline cost estimates
- (3) Coordinate with the USFS' NEPA planning process

- Explore opportunities to **increase boots-on-the ground capacity** and/or **stewardship contracting**

OBJECTIVE 1: OPTIMIZING ACTION FOR FUEL REDUCTION

Outcomes in 2-5 years:

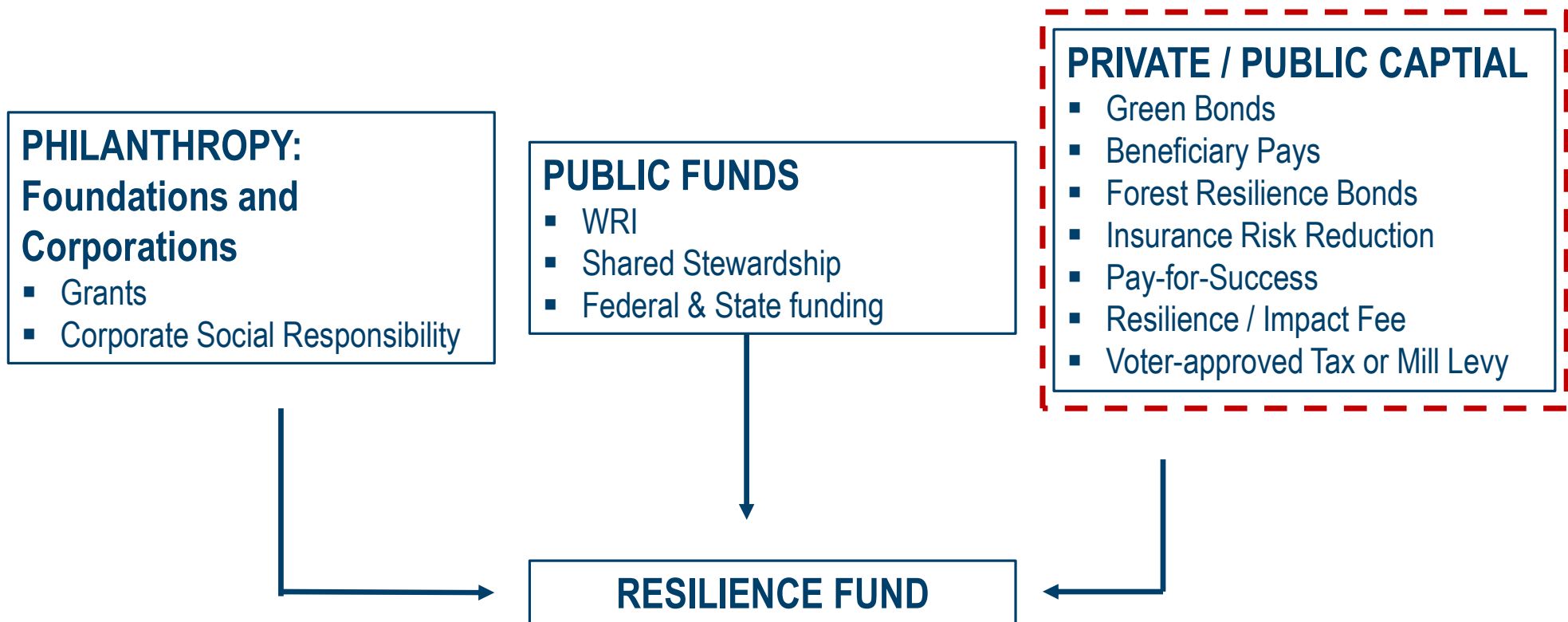
- Formalized framework for identifying, prioritizing, and funding forest restoration projects
- Launch the *Weber River Watershed Coalition*
- Priority acres are treated in the watershed, contributing to overall fire risk reduction in Summit County
- Identified multiple strategically located projects that are designed, funded, and implemented in the areas of highest risk and consequence (WUI and above water utility intakes)

OBJECTIVE 2: EXPLORING A RESILIENCE FUND

Activities:

- **Explore financing mechanisms** to deliver long-term fuel reduction funding
 - Summit County
 - Weber Basin and Mountain Regional Water Special Service District
 - Federal, state, corporate and philanthropic
- **Explore governance structures** that best positions the coalition with long-term funding options, strong legal and governance oversight, and community buy-in
- **Support the develop of business plan(s)** for coalition members and other stakeholders to demonstrate expected cost savings associated with forest restoration and fire mitigation activities

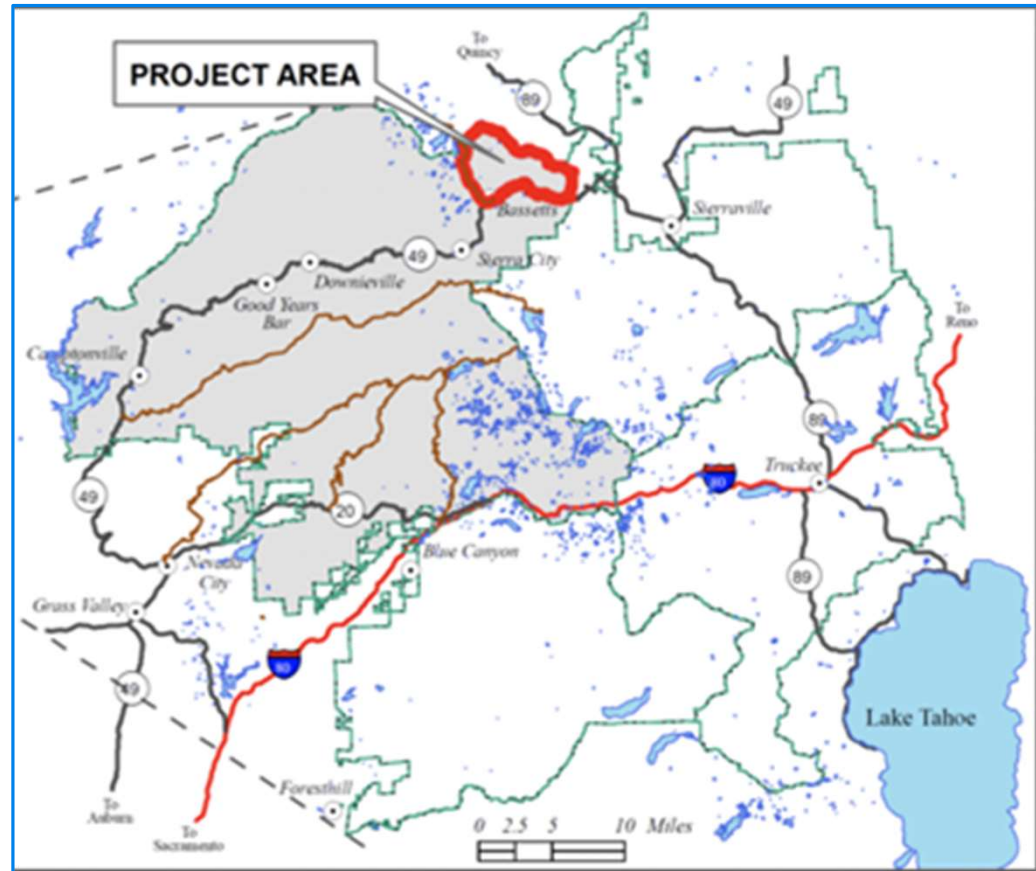
FINANCING SOURCES AND SEQUENCING





- \$4M FRB
- Market rate investors earn 4% annual return, 1% for PRI lenders
- Restoration across 15,000 acres in the Tahoe National Forest

The Forest Resilience Bond



CAW'S FIRST-EVER GREEN BOND

Little Rock, AR:

- \$31.8 million certified green bond
 - 33% for forest protection
 - 66% for gray infrastructure
 - True Interest Cost: 2.136%
 - Premium paid by Morgan Stanley
- Layering repayment sources
 - Sustainable timber
 - Carbon credits
 - Dedicated watershed protection fee
 - Ratepayer fees



• Photo: Central Arkansas Water

16 YEARS OF RALEIGH'S LEVERAGING CAPACITY

Raleigh, NC:

- Watershed protection fee \$2.2 million
- Raised - \$15 million
- Leveraging public & private: \$81 M+
 - Municipal contributions
 - Corporate philanthropy
 - Federal & state grants
- Conservation outcome:
 - 11,000 acres protected
 - 123 miles of stream buffers



- Photo: The News& Observer; Falls Lake



CONSERVATION
TRUST
FOR NORTH
CAROLINA

THE
CONSERVATION FUND



WORLD RESOURCES INSTITUTE



OBJECTIVE 2: EXPLORING A RESILIENCE FUND

Outcomes in 2-3 years:

- Actionable roadmap to create a **Resilience Fund** with recommendations for governance structure, funding streams, and oversight and management of the funds
- **Business plans** to support the long-term funding commitments from coalition members

OBJECTIVE 3: PUBLIC ENGAGEMENT

Activities:

- Develop **public engagement strategy**
- **Educate the public** about the positive impacts of forest restoration and fire mitigation activities
- Summit County would secure **1 FTE** to:
 - (1) Coordinate and implement the Weber River Watershed Coalition's fuel reduction projects
 - (2) Implement County Council's strategic vision for public lands and natural resource management and support current and long-range planning

OBJECTIVE 3: PUBLIC ENGAGEMENT

Outcomes in 2-3 years:

- Engaged and highly supportive **public** for fuel reduction treatments
- Approval to implement fuel reduction treatments on **private lands**
- **Approval and/or acceptance of public financing** to help pay for restoration and fire mitigation treatments
- Activities are implemented on the ground to support **County Council's strategic vision** for public lands and natural resources management

FUNDING SOURCES AND TIMING

Target Funding Sources	Amount	Purpose	Notes	Timing
Innovative Financing for National Forests (IFNF)	up to \$500k for 2-3 years	Support innovative financing solutions for public lands	Planning to submit	Spring 2021
Conservation Innovation Grant	TBD	Supports innovative financing on private lands		Fall 2021

NEXT STEPS

Next Steps

- (1) Continue to work with USU study team to define the project scope and costs
- (2) Continue to build this coalition by engaging with potential funding partners and stakeholders
- (3) Seeking the appointment of two County Council members to explore financing options the County could implement to contribute to the Resilience Fund that can be presented to the full Council during consideration of the fiscal year 2022 budget.
- (4) Apply for the IFNF grant once

Questions and Comments?