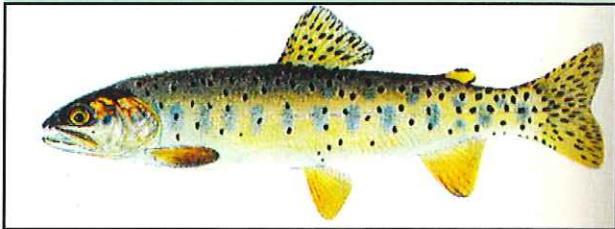


## WHAT IS STORM WATER RUNOFF AND WHY SHOULD YOU CARE?

When it rains, storm water runs off roads, parking lots, driveways, roofs, and yards. As it flows across these surfaces, storm water picks up contaminants such as oils, salts, sediments, fertilizers, pesticides, and household chemicals. Contaminated storm water flows into storm drains, ditches, and gutters, and eventually into streams and wetlands. Contaminants in storm water runoff impair water quality in streams and wetlands, and they can lead to fish kills, loss of wildlife habitat, and public health risks. Uncontrolled storm water runoff is one of the largest remaining sources of water quality impairment in the United States.



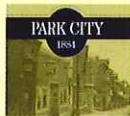
*The Bonneville cutthroat trout, a threatened species, has habitat in East Canyon Creek. East Canyon Creek is currently listed as an impaired waterbody, meaning water quality is too poor to sustain a healthy trout fishery.*

As communities grow and develop, more land is covered with impervious pavement. This means more water reaches streams more quickly and is potentially more contaminated. Communities working together can lessen the degree of contamination and help protect local water resources. Park City and Summit County have worked together to create the *Summit County and Park City Storm Water Management Plan*. In order for this plan to be successful, local cooperation is necessary. Please help protect our streams and wetlands by following a few basic tips concerning care of your home, car, and yard.

For more information about home, car, and yard care storm water issues, please see the listings below.



*For Summit County questions:*  
Summit County Engineer  
Phone: (435) 336-3250  
Email: dradke@co.summit.ut.us



*For Park City questions:*  
Park City Environmental Specialist  
Phone: (435) 615-5000  
Email: jschoenbacher@parkcity2002.com

### Hazardous Waste Disposal and Recycling

Summit County's Public Works facility in Wanship accepts household hazardous waste. Call the Public Works department at (435) 615-3970 for more information.

Recycle Utah also sponsors a hazardous waste collection event semi-annually. For more information about hazardous waste collection and recycling please contact Recycle Utah at (435) 649-9698.

### Recycling Drop-off Centers

**1825 Woodbine Way (behind Anderson Lumber Company)**  
This drop off center accepts newspaper, aluminum, steel (tin) cans, clear and colored glass, phone books, corrugated cardboard, brown paper sacks, junk mail, and white envelopes.

**Kimball Junction (Wal-Mart Parking lot)**  
This drop off center accepts newspaper and aluminum.

### Reporting Illicit Discharge

To report illicit discharge please contact the Summit County Health Department during normal business hours. After business hours please call the Summit County Dispatch Center, and they will contact the appropriate individual.

	<u>Health Department</u>	<u>Dispatch Center</u>
Coalville	(435) 336-3222	(435) 336-3500
Park City	(435) 615-3222	(435) 615-3500
Kamas	(435) 783-4351ext. 3500	(435) 783-4351ext. 3500



For  
Your  
Yard

